

The background is a solid blue color with several large, overlapping white circles of varying sizes scattered across it. The circles are positioned in the top-left, top-right, and bottom-left areas, leaving a central blue space for the text.

Partnerships for an Improved WASH Data Ecosystem

Hosted by WASHWeb
July 11th, 2024

Welcome!

Thank you for joining today's webinar on Partnerships for an Improved WASH Data Ecosystem

With speakers from:



Who are we?

- Dynamic, bottom-up initiative
- Community at the intersection of data & WASH
- Facilitating discussions on:
 1. Social Justice
 2. Using Data Better
 3. Systems Thinking
 4. 4Ws: Who's doing what, where & when?
 5. What are your ideas?

Who are we?



Nicolas Dickinson

WASHWeb Lead



Merel Laauwen

WASHWeb Coordinator

Our vision



Agenda

- 01 **openwashdata** Intro to openwashdata & invitation to WWW
- 02 **Dpmt of Cooperative Governance (SA)** Building Public Value Data – Towards a Single Source of Truth
- 03 **RWSN Data for Action** Partnership for Improved WASH Data
- 04 **WHO** Align to accelerate: Monitoring the strength of WASH systems
- 05 **UWASNET** UWASNET's Experience
- 06 **BASEflow** A Malawi Case Study

Q&A in the chat

- Ask your questions in the chat during the call
- We will select and ask a few questions to our presenters at the end

Next steps

- Follow us on LinkedIn for updates @WASHWeb
- Feel free to contact Nick & Merel via hello@washweb.org if you want to lead a discussion group or have ideas for an upcoming webinar / event

Let's get started!

The background features a solid blue field with several large, overlapping white circles of varying sizes. The circles are positioned in the upper left, lower left, and top right areas, creating a modern, abstract design.

openwashdata

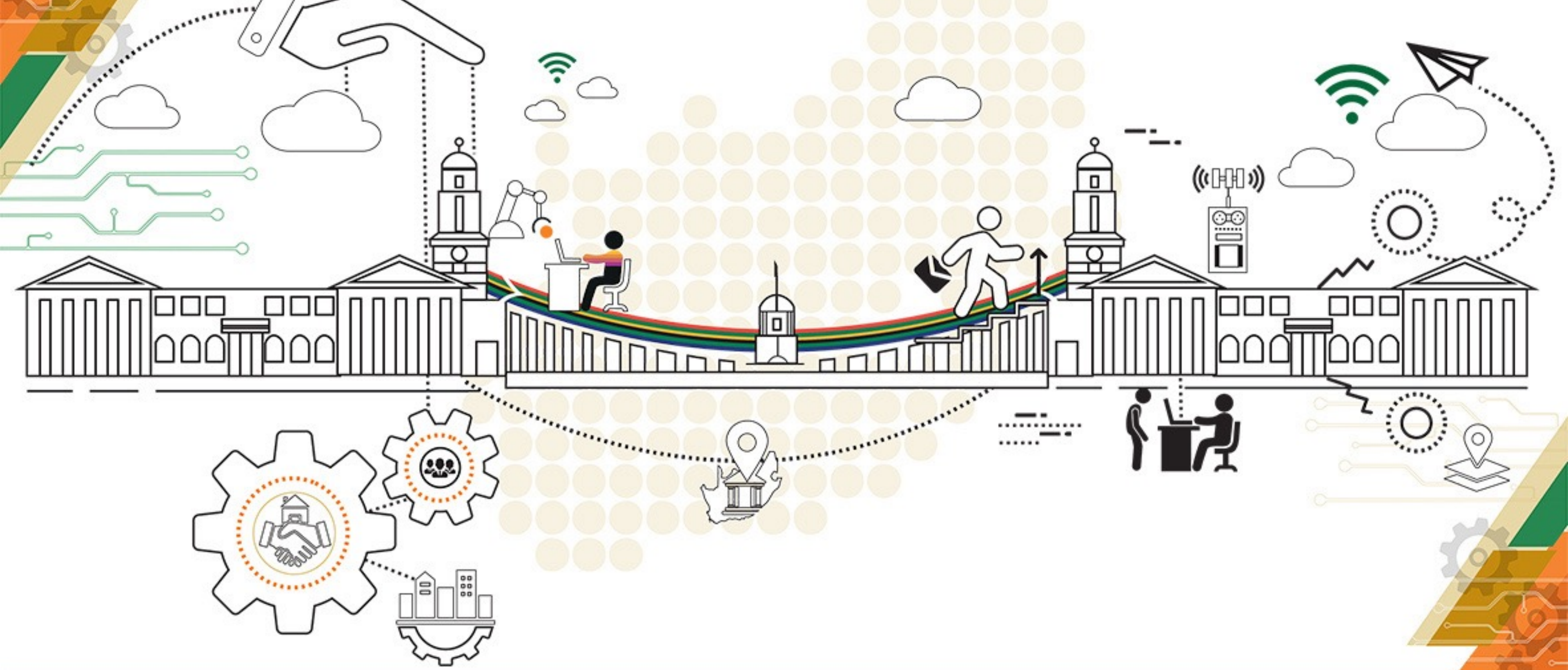
Hosted by WASHWeb
July 11th, 2024





Government of South Africa: Department of Cooperative Governance

Hosted by WASHWeb
July 11th, 2024



**cooperative
governance**

Department:
Cooperative Governance
REPUBLIC OF SOUTH AFRICA

Building Public Value Data Ecosystem – Towards a Single Source of Truth

Dr Sandile Mbatha
National Chief Data Officer
Date: 11 July 2024



National Strategic Hub
REPUBLIC OF SOUTH AFRICA

CONTENTS

INTRODUCTION

- Our complex government data context

OVERVIEW OF THE NATIONAL STRATEGIC HUB

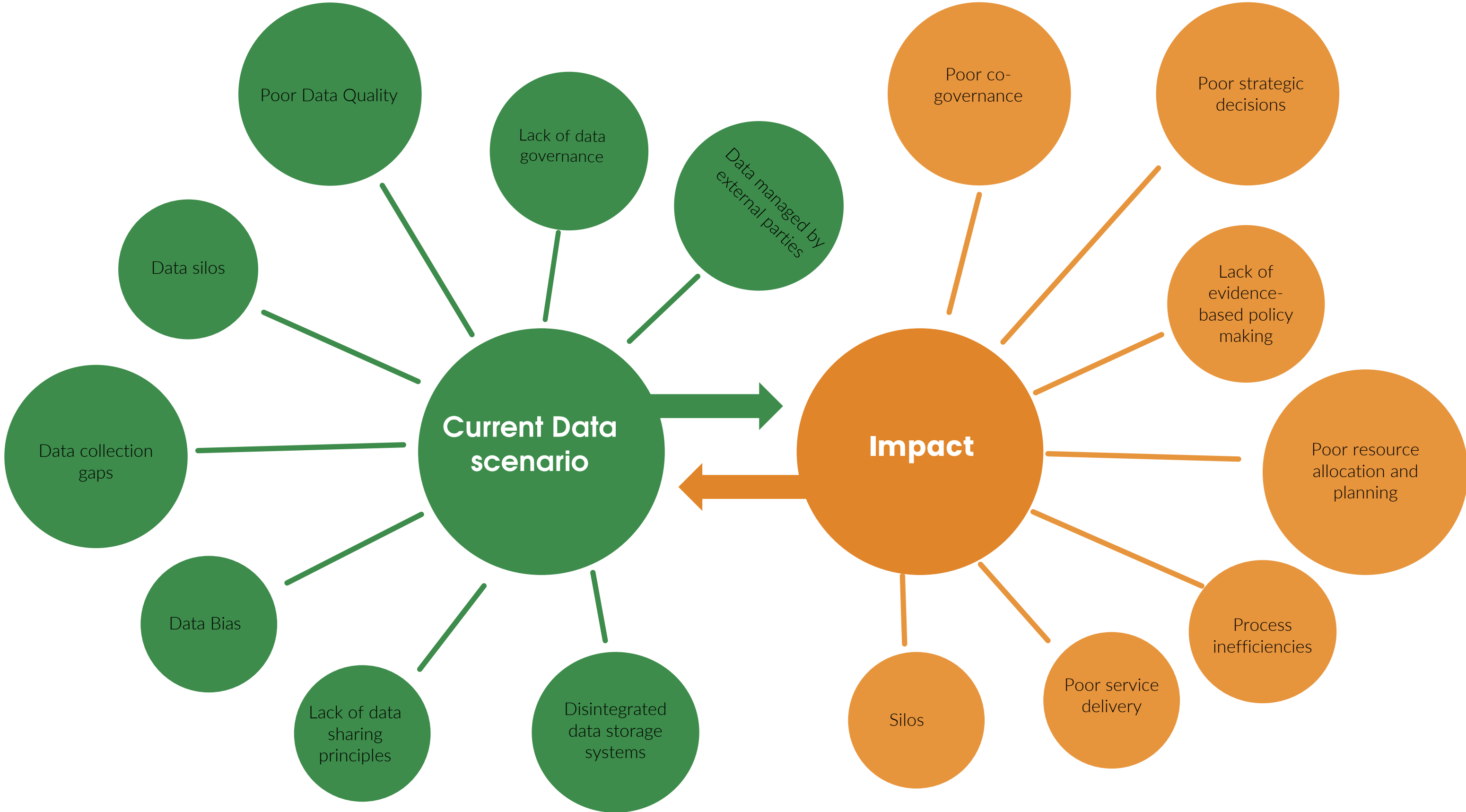
- Tools & Products

PUBLIC VALUE DATA ECOSYSTEM

- Partnerships: Strategic Intent
- WASH data ecosystem



OUR COMPLEX GOVERNMENT DATA CONTEXT:





National Strategic Hub
REPUBLIC OF SOUTH AFRICA

**“OUR SINGLE SOURCE
OF TRUTH”**

MISSION:

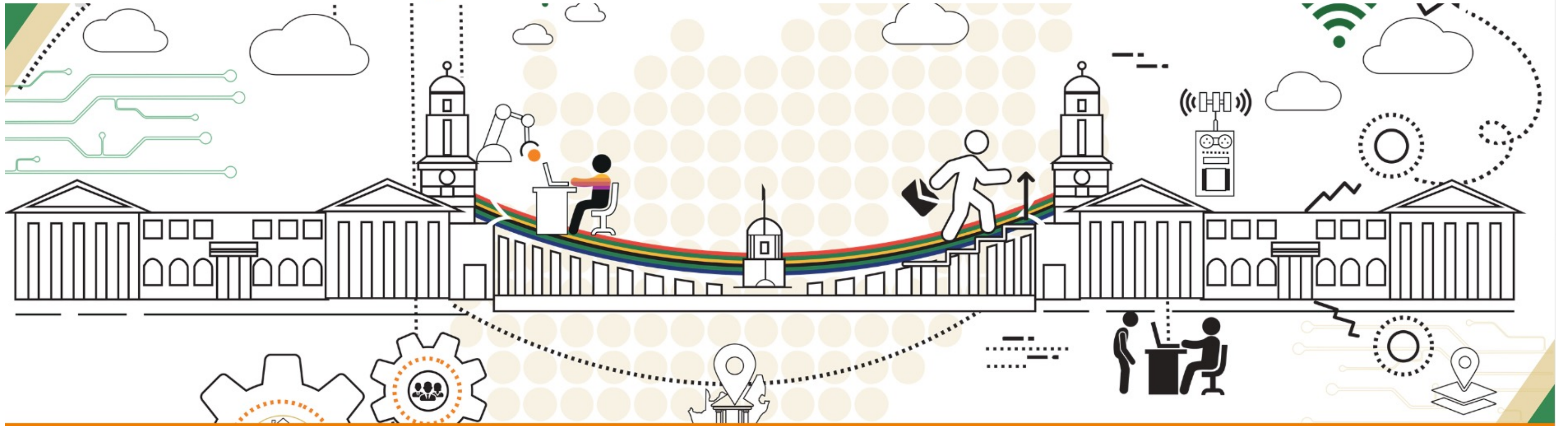
- Position **data as critical infrastructure and an asset** for improved governance, operational efficiencies and service delivery.
- Provide decision makers with **a comprehensive view of the nation**, nurturing a data-driven culture where decisions are grounded in insights rather than instincts or political sentiments.



**cooperative
governance**
Department:
Cooperative Governance
REPUBLIC OF SOUTH AFRICA

NATIONAL STRATEGIC HUB: PORTAL

Home GovSearch District Profile Living DDM One Plans Dashboards Service Delivery Simulator Data in Action More



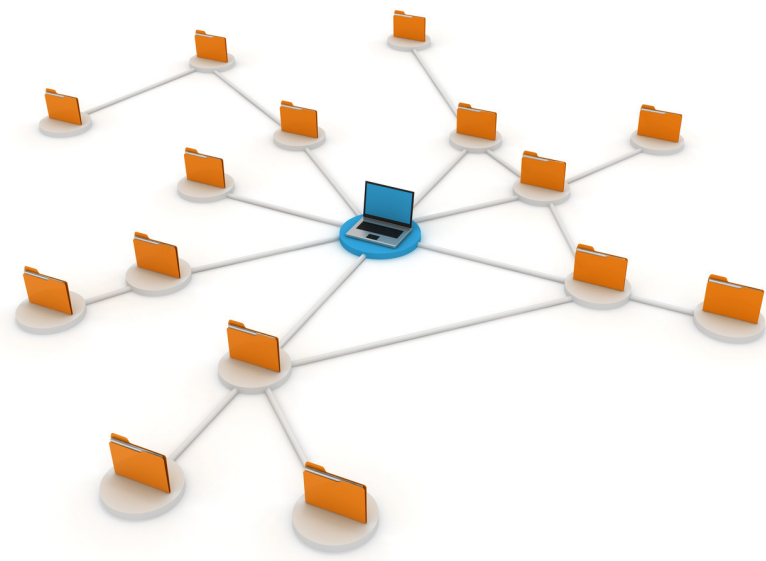
National Strategic Hub

Our single source of truth

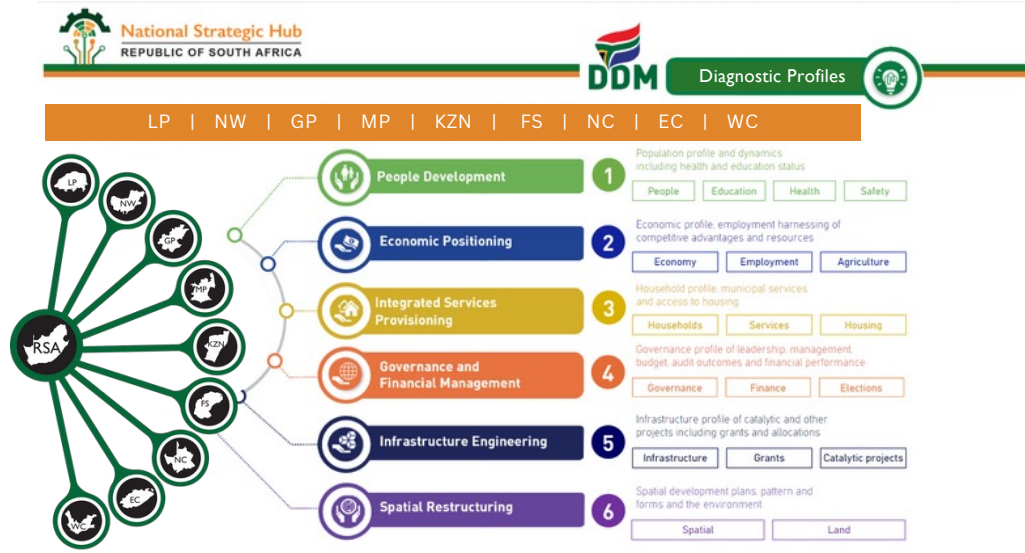


cooperative
governance
Department:
Cooperative Governance
REPUBLIC OF SOUTH AFRICA

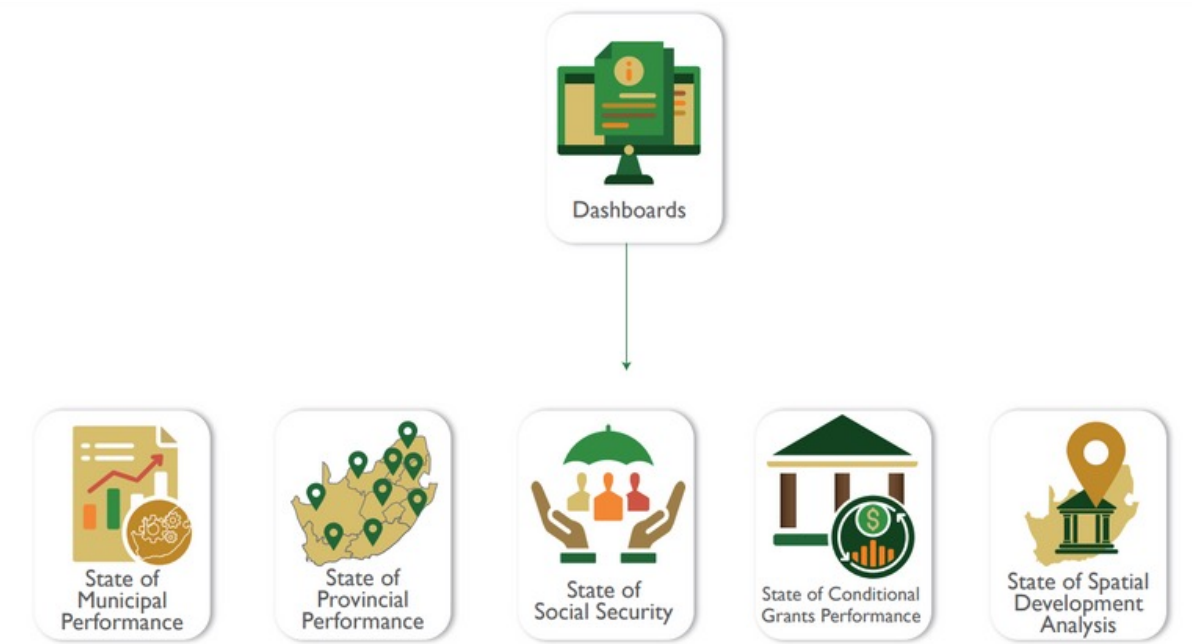
TOOLS & PRODUCTS



1. INTEGRATED COUNTRY LEVEL DATA



2. NATIONAL, PROVINCIAL & DISTRICT DIAGNOSTIC PROFILES



3. SECTOR DASHBOARDS



GovSearch



For authenticated government data, ask Thembi!

4. GOVSEARCH



5. LIVING ONE PLANS



6. DATA TO ACTION

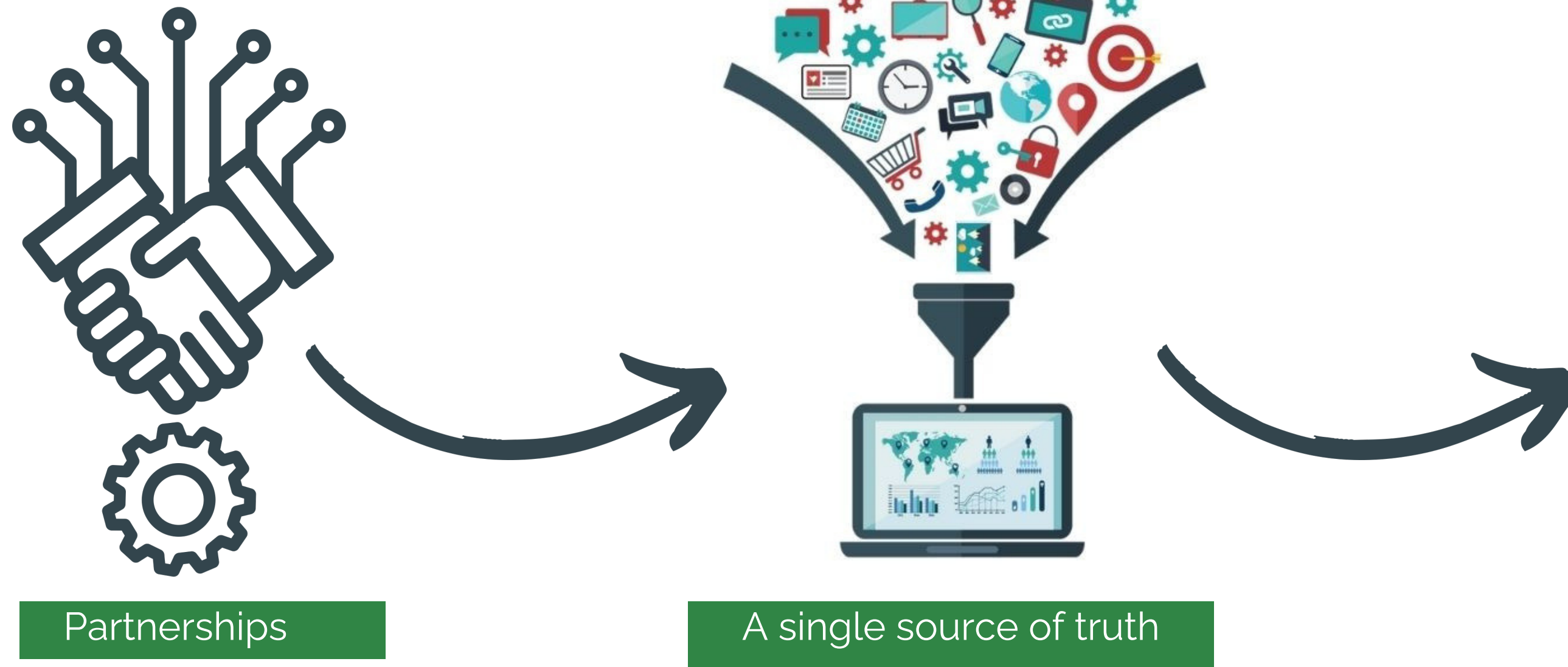


7. SERVICE DELIVERY SIMULATOR



BUILDING A PUBLIC VALUE DATA ECOSYSTEM | STRATEGIC INTENT

Leverage data and partnerships to support evidence-driven decision-making, towards improving:



SO WHAT?

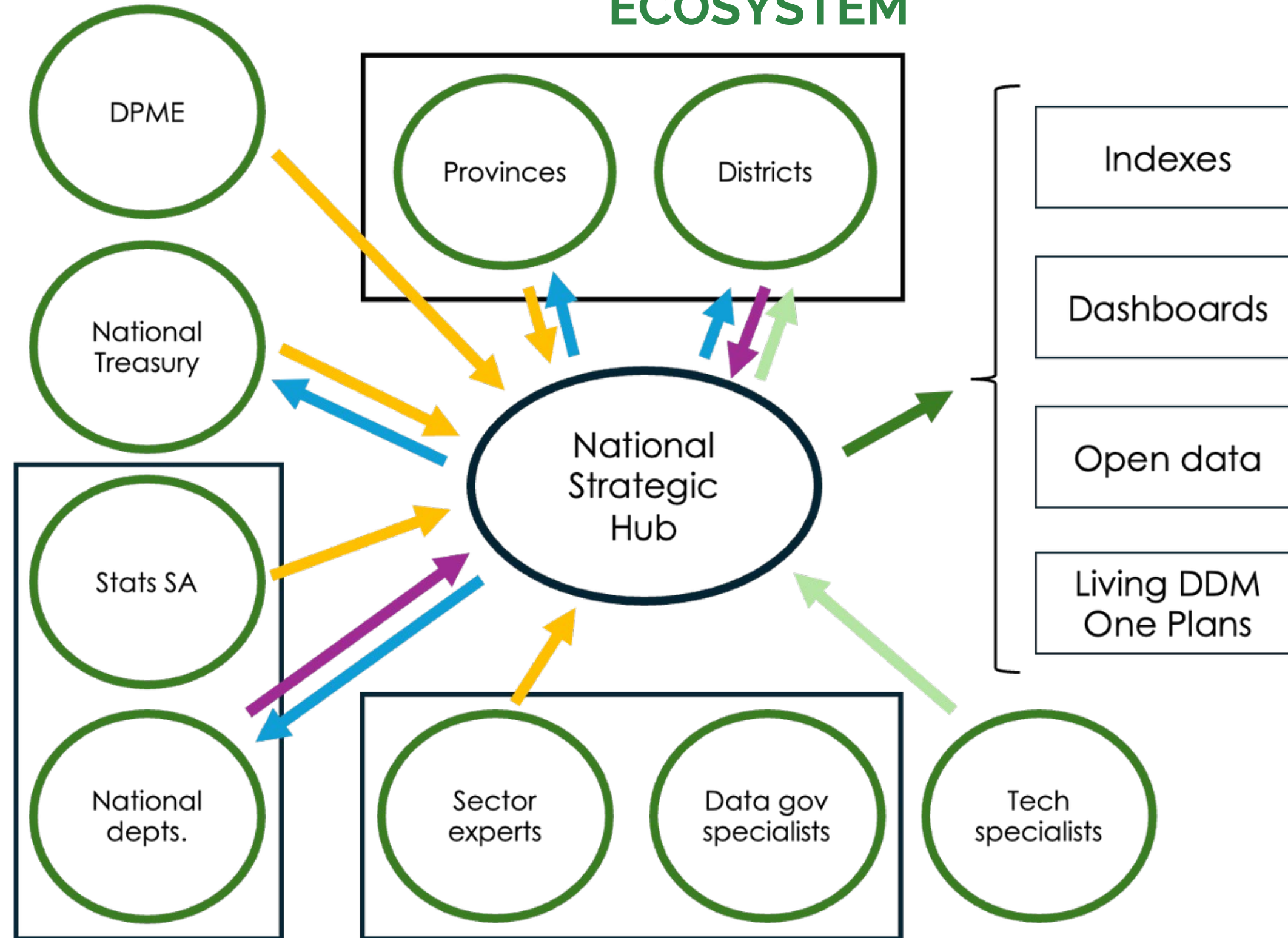


- Data literacy
- Governance
- Operational efficiencies
- Service delivery
- Resource allocation







Impact

BUILDING A PUBLIC VALUE DATA ECOSYSTEM

An “all-of government,
all-of society”
Approach



LEGEND:

-  Sector working groups
-  Data custodians
-  Insights
-  Feedback
-  Hub Products
-  Infrastructure development & Capacitation

WASH

Conclusion

WASH is a collective responsibility

Data is a catalyst and a foundation for:

- **Operational efficiencies**
- **Collaboration**
- **Robust partnerships**
- **Equitable access to WASH services and infrastructure**
- **Co-governance, sustainability and inclusion**

Thank
you!



cooperative
governance
Department:
Cooperative Governance
REPUBLIC OF SOUTH AFRICA

RWSN Data for Action

Hosted by WASHWeb
July 11th, 2024





hosted by



Rural Water Supply Network

RWSN Partnership for an improved WASH Data Ecosystem

Mutala Abdul-Mumin, Co-Lead Data for Action Theme

11.07.24



About RWSN

We are a global network of individual professionals and organisations dedicated to rural water supply

Founded: 1992
Membership: 16,000+ individuals
100+ organisations
in 170 countries
Followers: 28,000+ on LinkedIn
Secretariat: Skat Foundation

Executive Committee:



Multi-language webinars:

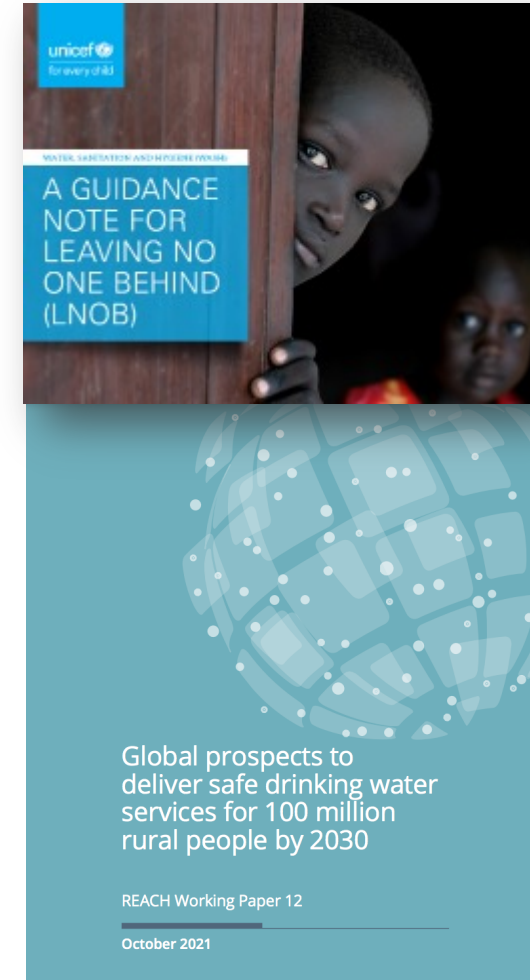
- Typically, 8-12 a year in 2-3 languages with 150-300 participants.
- Launch of WHO Guidelines (15 February 2024)
 - 6 languages
 - 1010 participants from 159 countries

Mentoring:

- 1,359 mentors & mentees since 2019
- In 2023: 250 participants from 66 countries

Developing research and guidance, e.g. with and for UNICEF and University of Oxford

Key Alliances:



RWSN in the Network Ecosystem

Our partner networks and knowledge hubs (2024)

While RWSN is the only global network dedicated to rural water supply, we recognise that purely focusing on our 'silo' will not lead to the change that we want to see.

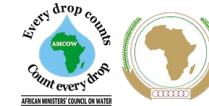
Therefore, we will continue to foster active alliances with other networks, partnerships, associations and consortia in a smart way to achieve greater outreach and impact.

During 2024-2030 we will:

- Develop stronger links with regional and national water operator and WASH networks and associations.
- Explore beyond our existing network circle in WASH and water resources to build effective partnerships in other sectors, such as education, agriculture, energy, rural development and climate change, that support the vision of the network.



International Network of Drinking-water and Sanitation Regulators (RegNet)



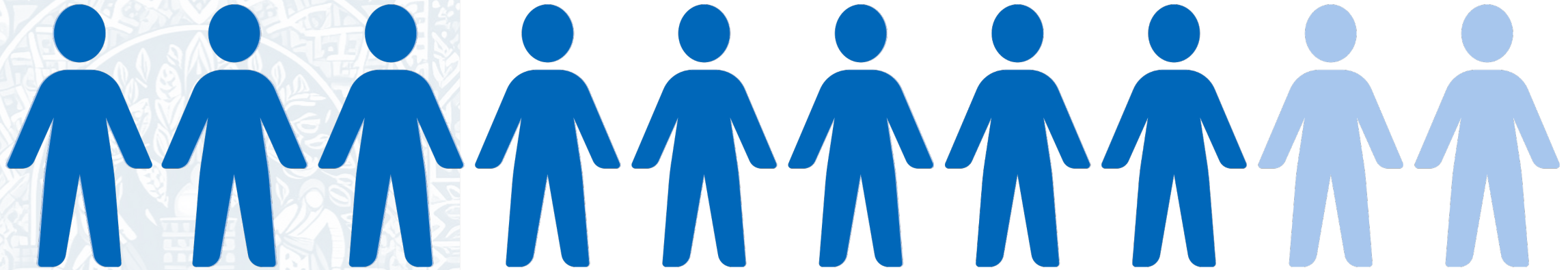
Household Water Treatment & Safe Storage Network



Swiss Alliance for Sustainable Food Systems



80%



**8 out of 10 people (580 million)
without basic water services
live in rural areas**

How RWSN works to create change

1

**Networking,
Connecting & Convening**

2

**Knowledge Brokering
& Information Hub**

3

**Training, Guidelines
& Standards**





Data for Action

The Data for Action Theme focuses on:

- **Innovation** in data for rural water, including harness emerging technologies and trends, such as Artificial Intelligence and Machine Learning.
- **Strengthening** how rural water data is used systematically to support decision-making at all levels.
- **Identifying** and **developing guidelines** where there is a need.
- **Supporting** harmonisation of indicators, benchmarking and open data standards (such as the Water Point Data Standard).



This webinar had over 360 WASH professionals from all over the world

Participating.

This is a link to the recorded webinar

<https://lnkd.in/gyPeT2vV>

AI Webinar

Artificial Intelligence and Water Management: Opportunities, Effectiveness, Limitations and Ethics



11 JUNE
14:00-15:30 CEST

In **English** with live translation into **French**

Speakers



Kwaku Adjei
Kwame Nkrumah
University of Science and
Technology, Ghana



Snehal Verma
NatureDots
India



Olivier Mills
WASH AI
Canada

Moderators



Muthi Nhlema
BASEflow



Mutala Abdul-Mumim
WaterAid



A Call to Action

- The data we generate in our line of work must be shared
- The data we require to make informed decisions can be provided by other partners
- Together we can work to generate timely and reliable data
- Are you a member of the RWSN?
- Do you want to join the Network?
<https://www.rural-water-supply.net/en/>

The Data for Action Community
https://dgroups.org/rwsn/data4action_rwsn



Thank You

The background of the slide is a solid blue color. It features several large, white, overlapping circles of varying sizes. The largest circle is at the top right, and others are positioned to its left and bottom left, creating a dynamic, abstract pattern.

World Health Organization

Hosted by WASHWeb
July 11th, 2024

Align to accelerate: Monitoring the strength of WASH systems

Online webinar – Partnerships for an improved WASH data ecosystem



Monitoring the strength of WASH systems – sharing the vision for more impact

Do we have a sound agreed core set of indicators and common monitoring and review framework that would support decision-makers to monitor progress, evaluate impact, and ensure accountability?

Progress needed to reach SDG 6.1 and 6.2

- According to the **JMP 2023 report** the world is dramatically off-track to reach SDG 6.1 and 6.2
- Yet, some countries have successfully and rapidly increased coverage of WASH services
- **What are the factors that lead some countries to make rapid progress towards increasing access to WASH services and others not?**

Since 2015, 32 countries have increased coverage of at least basic drinking water by at least five % pts

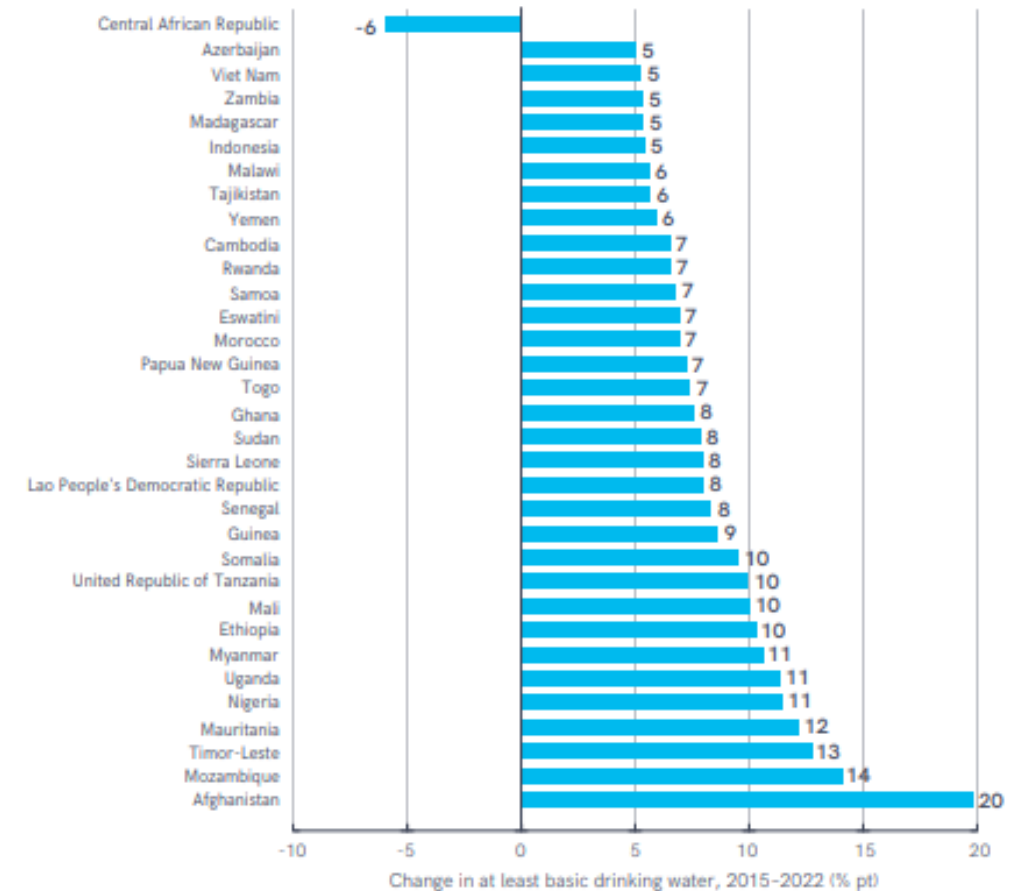
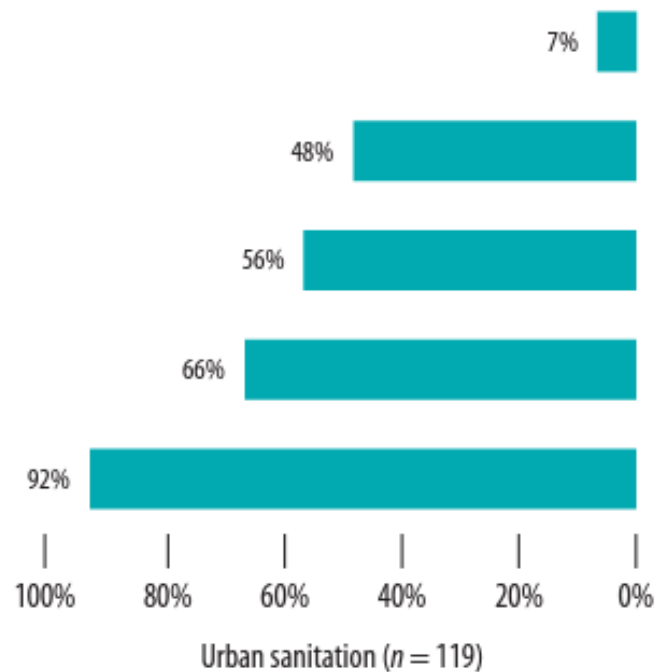


FIGURE 25

Change in proportion of population using at least basic drinking water services, among countries with at least five % pt change, 2015-2022 (% pt)

Insufficient financial and human resources overall

Two thirds of countries have policies, but few countries have costed plans with sufficient financial and human resources to implement them.



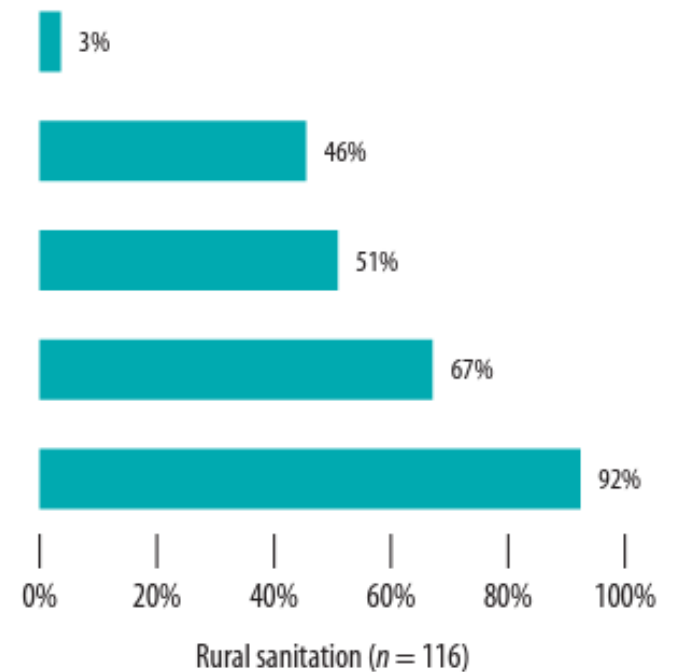
Countries with formally approved policy and approved and costed plan with sufficient financial and human resources

Countries with formally approved policy and approved and costed plan

Countries with formally approved policy and approved plan

Countries with formally approved policy

Countries with a formally approved policy or policy under revision or under development



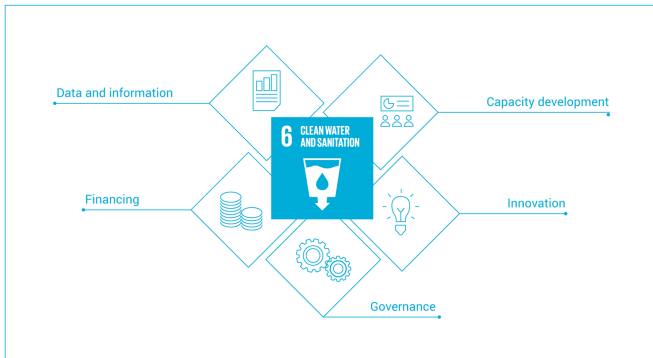
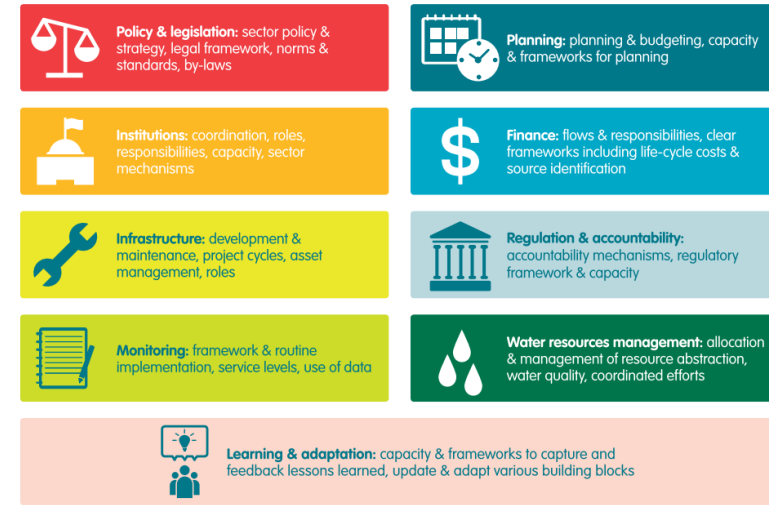
Note: "Sufficient financial and human resources" is defined as having more than 75% of what is needed to implement sanitation plans.

Source: GLAAS 2021/2022 country survey.

What do we mean by WASH systems?

- UNICEF: Planning, analysis and collaboration for better-info
- World Bank: Policies, institutions, and regulation (PIR)
- IRC: All the social, technical, institutional, environmental and actors, motivations and interactions that influence WASH systems context

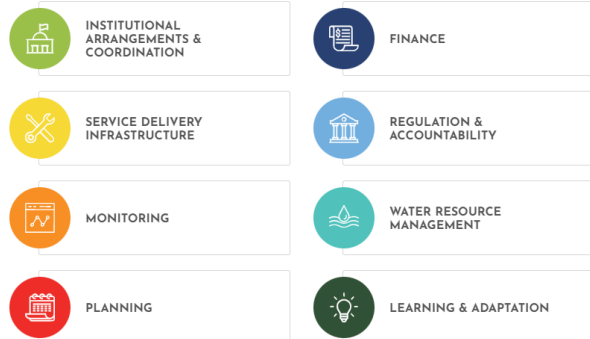
WASH System



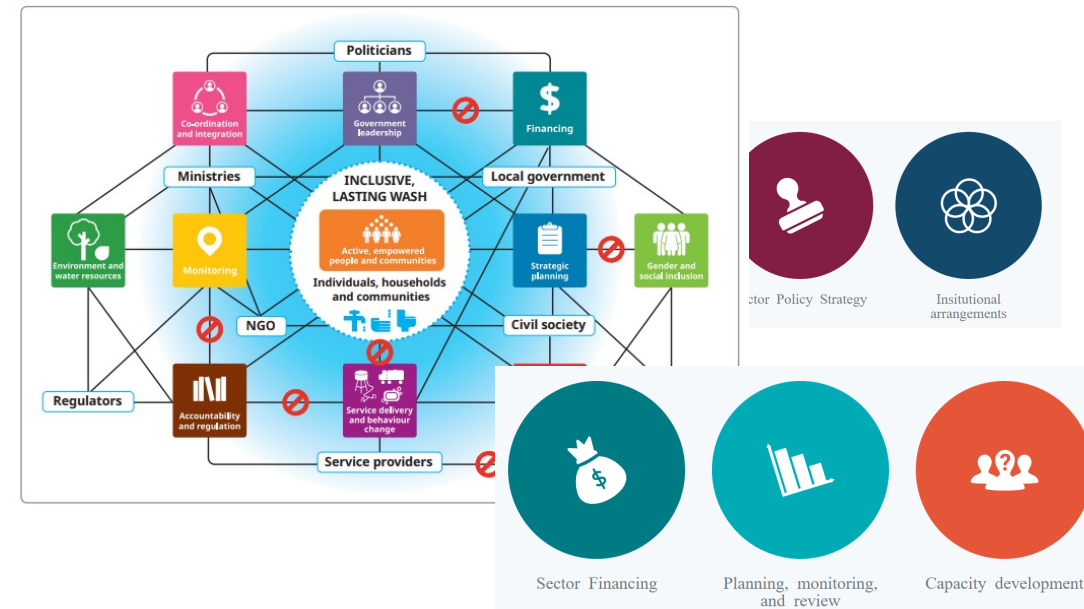
SWA Building Blocks: Sector policy strategy; institutional arrangements; sector financing; planning monitoring and review; and capacity development

UN-Water accelerators: Data and information, capacity development, financing, innovation and governance

- **GLAAS:** governance, monitoring, finance and human resources



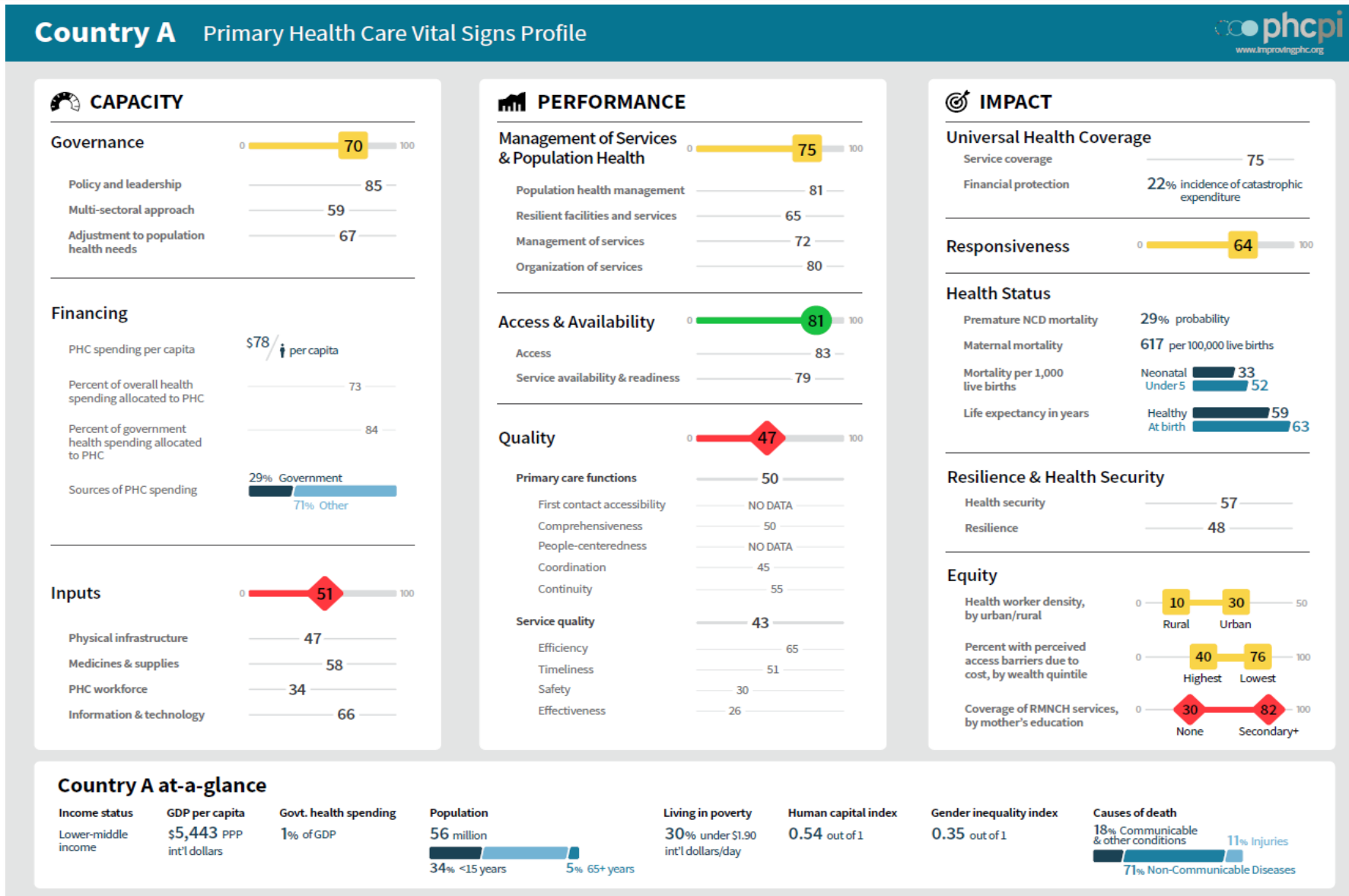
AGENDA FOR CHANGE



Multi-stakeholder initiative - Objectives

- To steer a process for development of a core indicators and a common monitoring and review framework to monitor the strength of WASH systems.
- To pilot in a few selected, but diverse country settings: data collection, data visualization and data use by national and regional/global actors, based upon a localized approach
- To support governments and partners in the establishment of a process for regular national monitoring and review of the strength of WASH systems, e.g. evidence-based joint sector review-type process, based on a set of national indicators that will include the core indicators.

Monitoring Primary Health Care (PHC) performance: an example of a national performance dashboard for country use



- A **snapshot** of PHC in individual countries – where systems are strong and where there are challenges.
- Identify priority areas for improvement and track and trend improvements over time.
- Supports transparency and accountability for results.

Next steps

- Share concept note more widely
 - Sector-wide initiative
 - Identification of pilot countries
- Preparation of a discussion paper
 - Call for evidence
- Preparing for Phase 2 and formation of technical working groups
- Ensure alignment with climate resilient WASH monitoring, SDG 6 means of implementation review, FCDO WASH systems for health, etc.

Discussion paper

- Overview of existing WASH systems strengthening frameworks
- Consolidation of existing indicators used by countries and partners for monitoring of WASH systems elements
- Comparison with health and other sector systems monitoring frameworks and cross-cutting issues
- Review of evidence linking WASH systems elements to outcomes and impact
- Proposed framework for the core WASH systems indicators

Call for evidence

Please share any relevant frameworks and indicators to be considered in the discussion paper by **19 July**

washmonitoring@who.int



Thank you!

For more information, contact
washmonitoring@who.int

The background features a solid blue field with several large, overlapping white circles of varying sizes. The circles are positioned in the upper left and lower left areas, creating a modern, abstract design.

UWASNET

Hosted by WASHWeb
July 11th, 2024





UWASNET

PARTNERSHIP FOR AN IMPROVED WASH DATA ECOSYSTEM: UWASNET's Experience

Yunia Yiga Musaazi

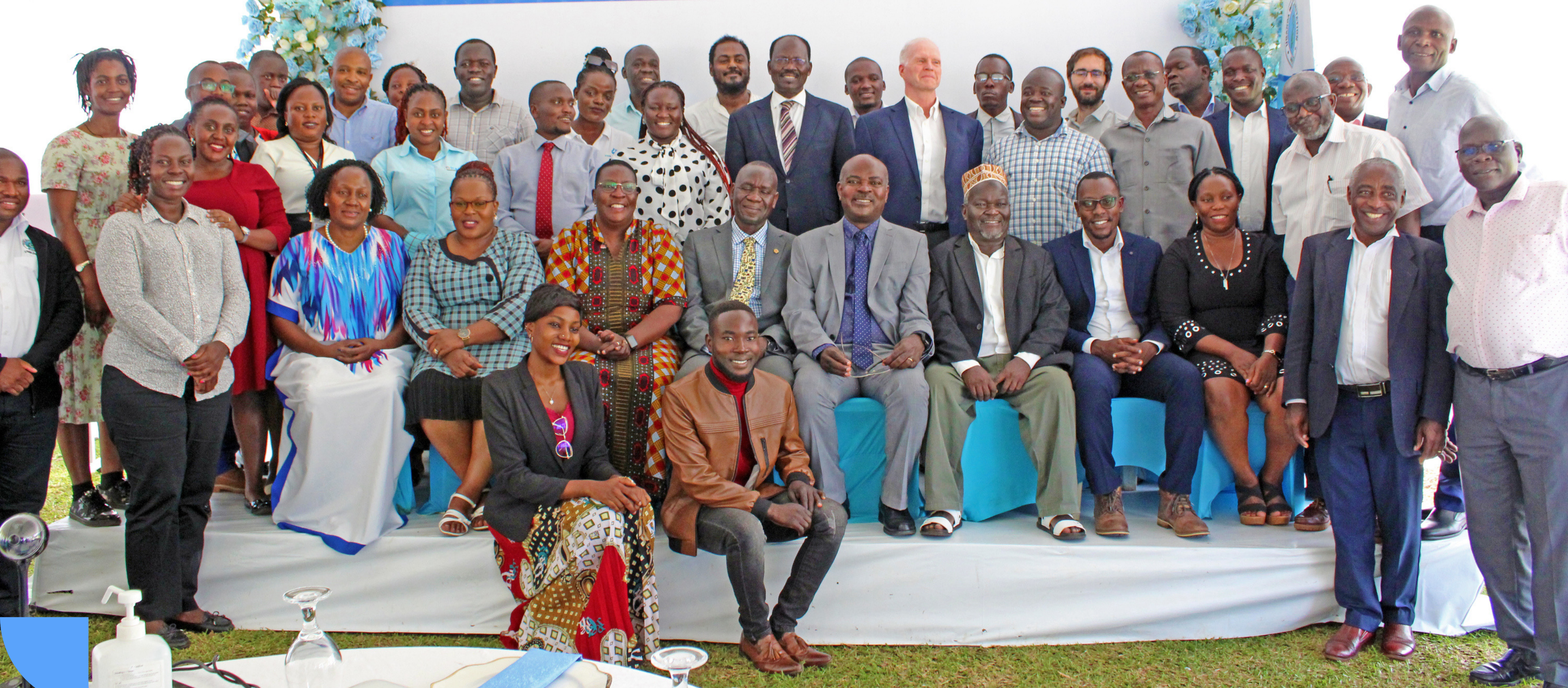
WASHWeb Webinar

Thursday, July 11, 2024



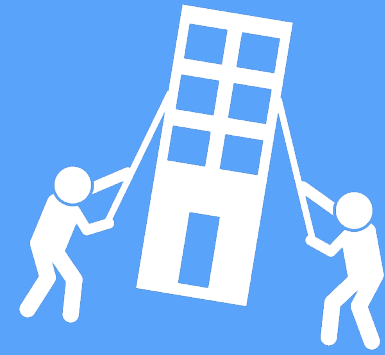


UWASNET 17TH ANNUAL GENERAL MEETING





WHO WE ARE?



Founded in 2000



Membership of more than 250 Civil Society Organizations (CSOs)

OUR MANDATE



Coordinate all CSOs in the water and environment sector



Facilitate learning and sharing amongst CSOs



Promote partnerships and collaboration between CSOs and other stakeholders



Document the work of CSOs in the sector



Strengthen CSOs' contributions to the sector


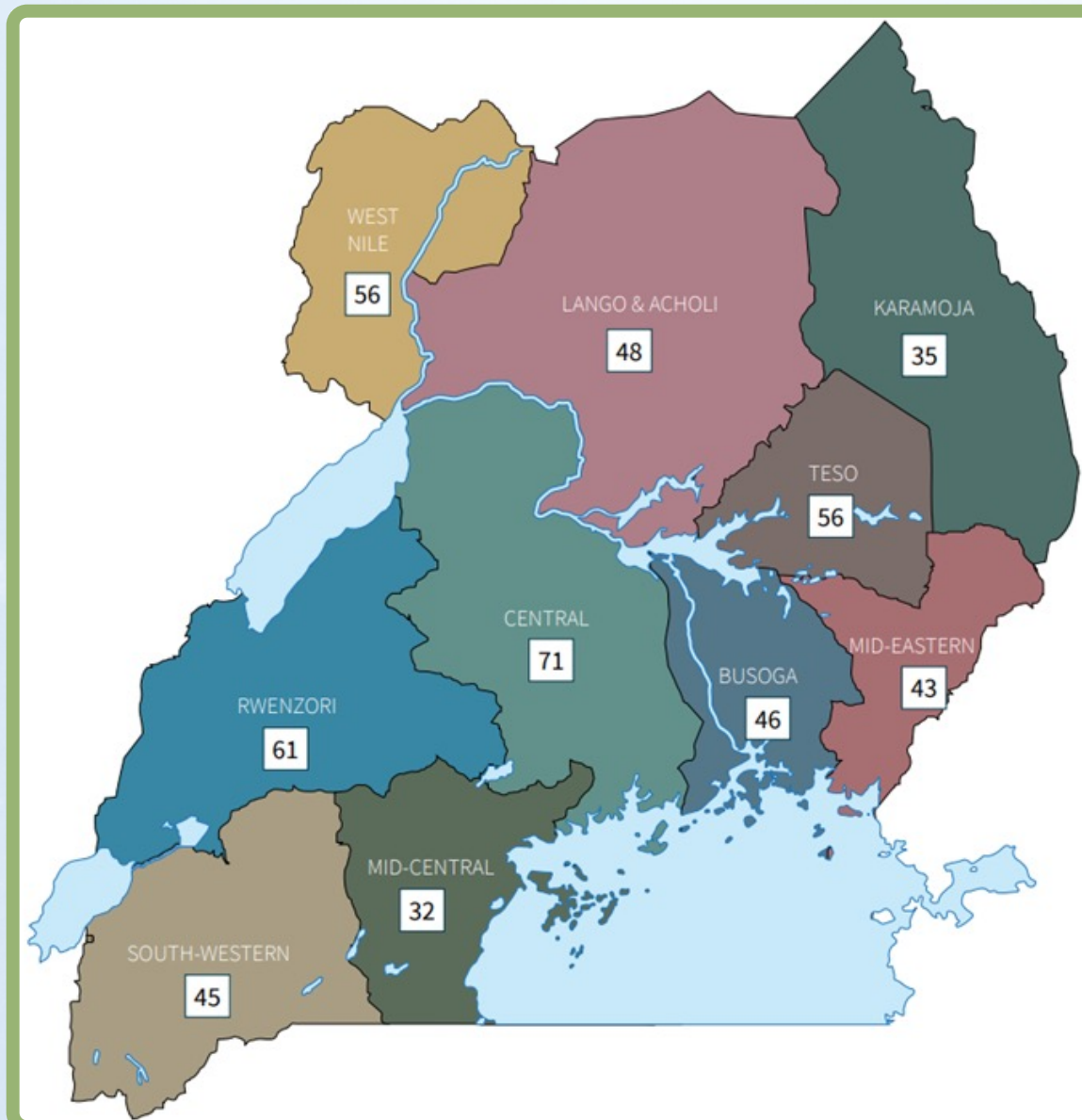


UWASNET REGIONAL STRUCTURE AND MEMBERSHIP PER REGION




National	84
International	33
CBOs	27


UWASNET PARTNERSHIPS IN WASH DATA



UWASNET
Uganda Water and Sanitation Network (UWASNET)




CSO ANNUAL PERFORMANCE REPORT
FY 2022/23



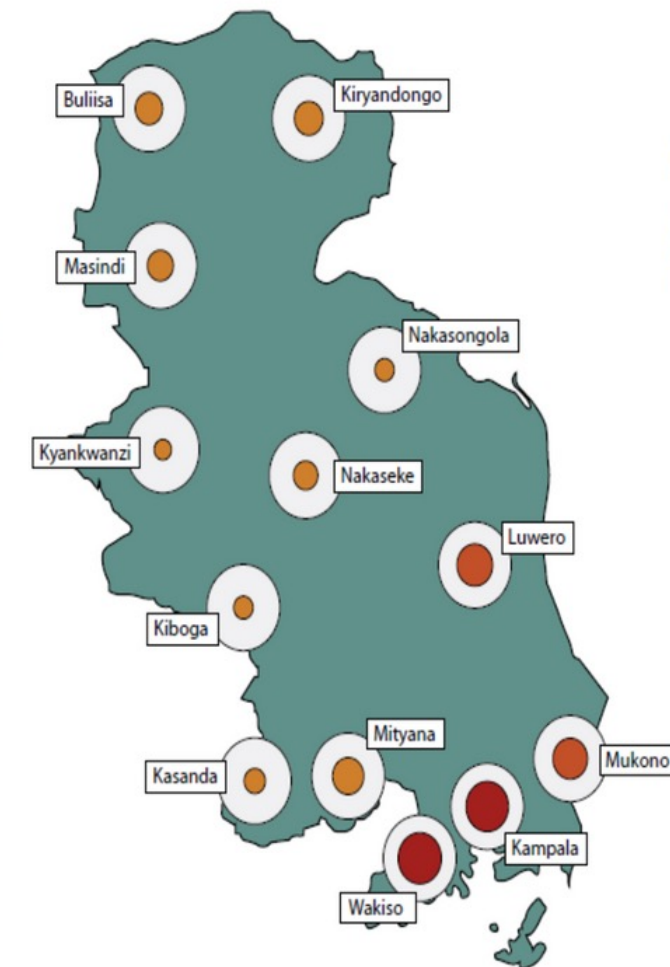
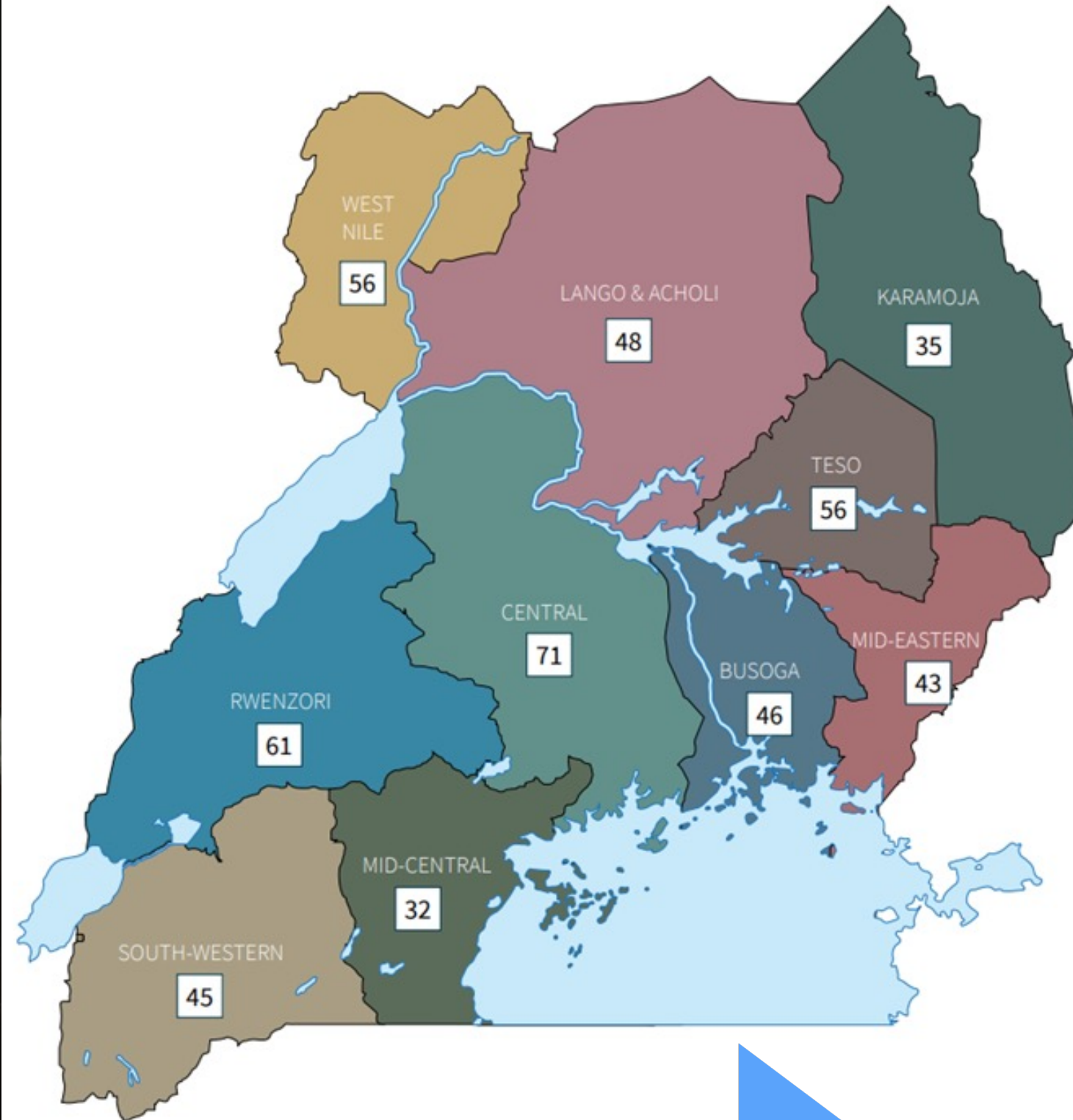
THE REPUBLIC OF UGANDA

NATURAL RESOURCES, ENVIRONMENT, CLIMATE CHANGE, LAND AND WATER MANAGEMENT

PROGRAMME PERFORMANCE REPORT 2023

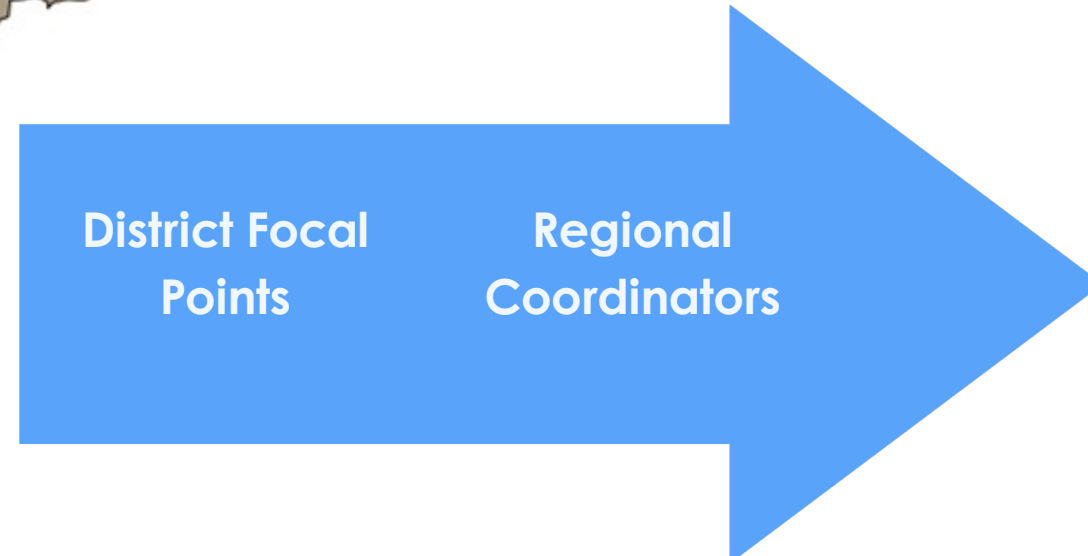


UWASNET WASH CSOS DATABASE

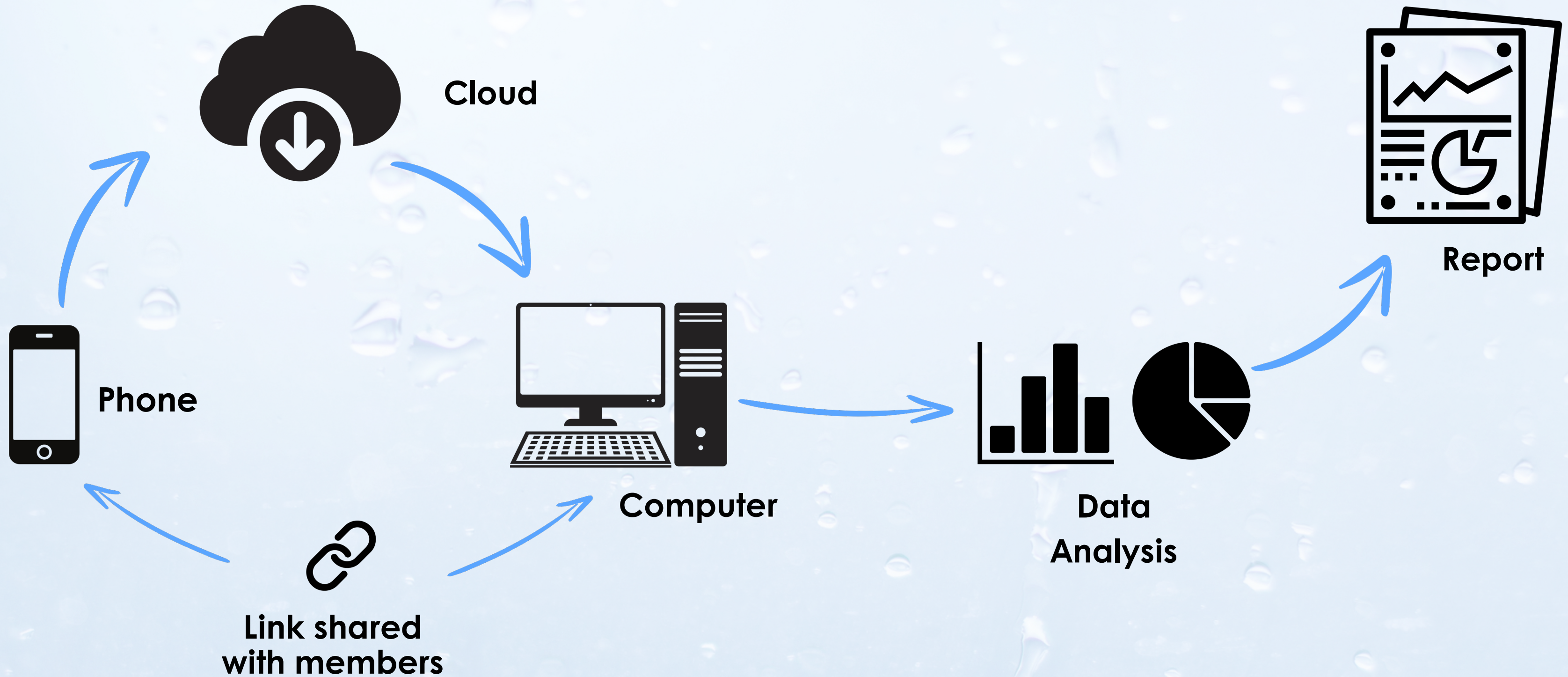


CSO CONCENTRATION
The regional map shows that CSOs are concentrated mainly around Kampala and Wakiso as well as Mukono and Luwero.

District
No. of CSOs Active in District
Total No. of CSOs Active in Region



ANNUAL WASH CSO REPORTING KOBOTOOL





CSO REPORTING THROUGH KOBOTOOLBOX

KoboToolbox

UWASNET CSO Reporting FY2022/2023

This form is intended to obtain information that will contribute to the report on the annual civil society organisations (CSO) contribution to the Uganda Water and Sanitation Sub-sector. The data collected will be analysed and compiled by UWASNET to reflect CSO performance in the sector. Kindly fill in all the required details. Thank you in advance for your cooperation and contribution.

[→ Next](#)

[↶](#) Return to Beginning [Go to End](#) [→](#)

***Which thematic areas covered your activities during the reporting year?**
Select all that apply.

- Water Supply Infrastructure
- Water Supply Operation and Maintenance
- Sanitation Infrastructure
- Sanitation Promotion Interventions
- Integrated Water Resource Management
- Water for Production
- Research and Development
- Capacity Building

[→ Next](#)

[Back](#)

[↶](#) Return to Beginning [Go to End](#) [→](#)

Indicators well aligned to PIAP indicators

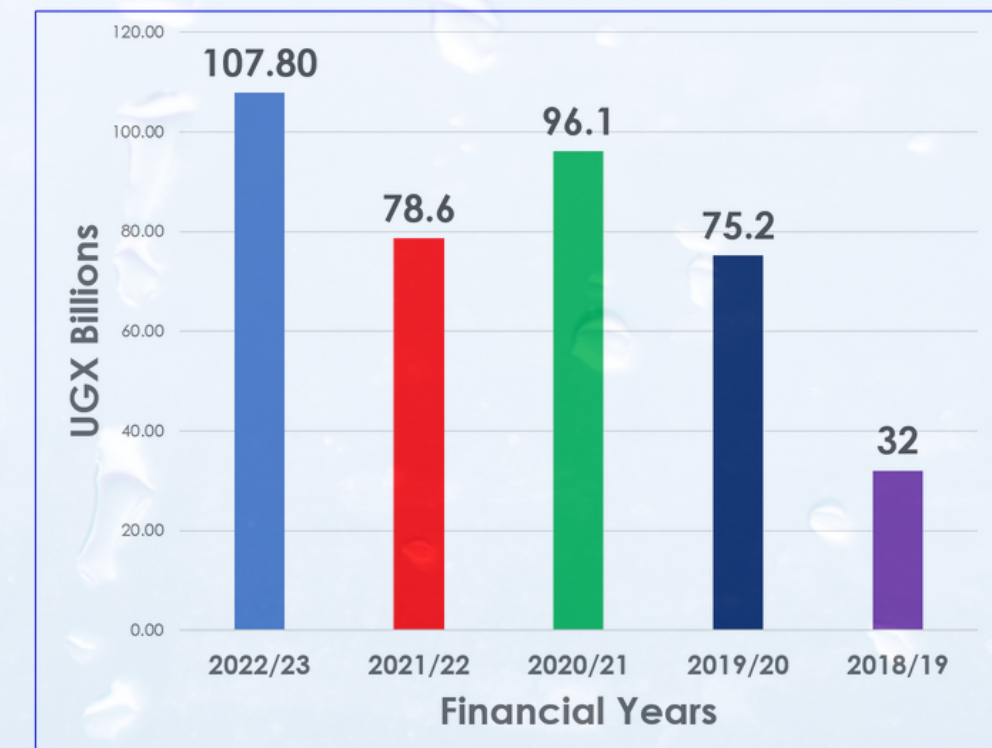
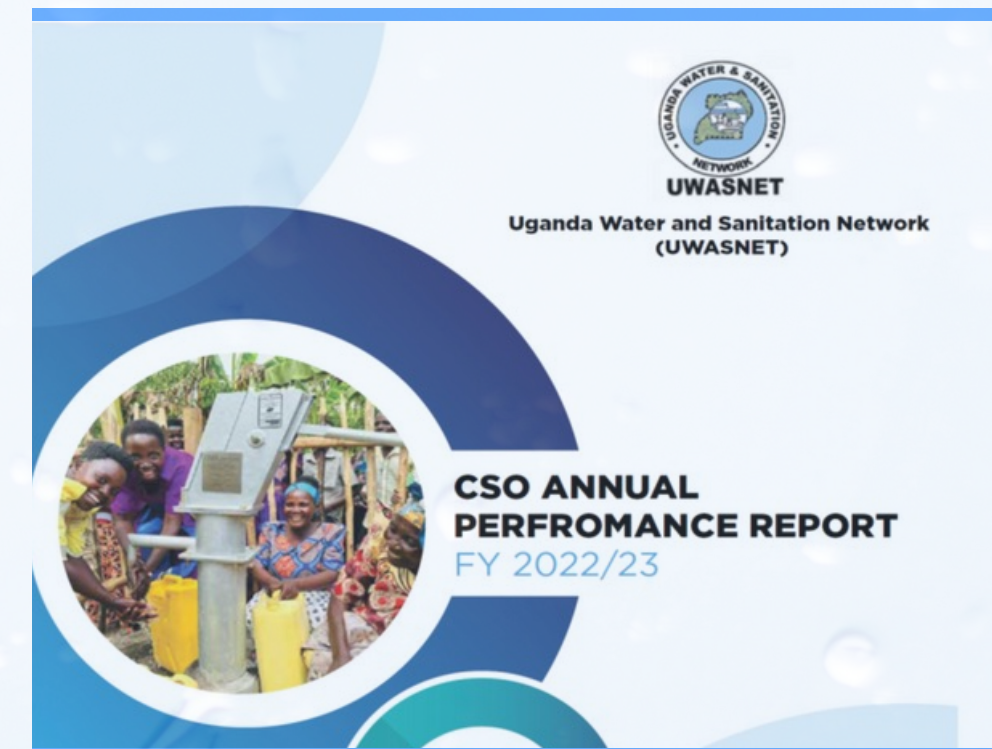


ANNUAL WASH CSOS PERFORMANCE REPORT

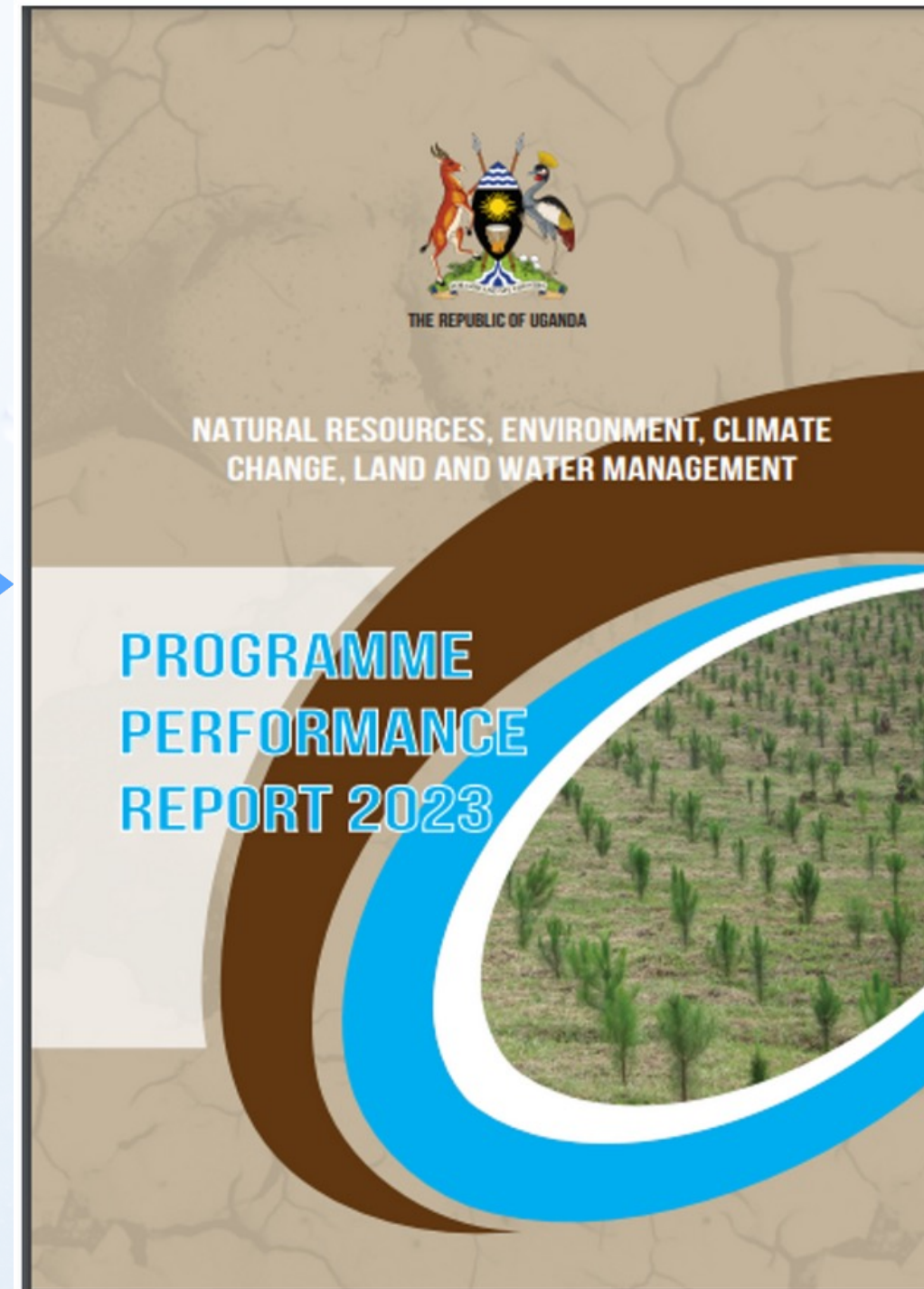
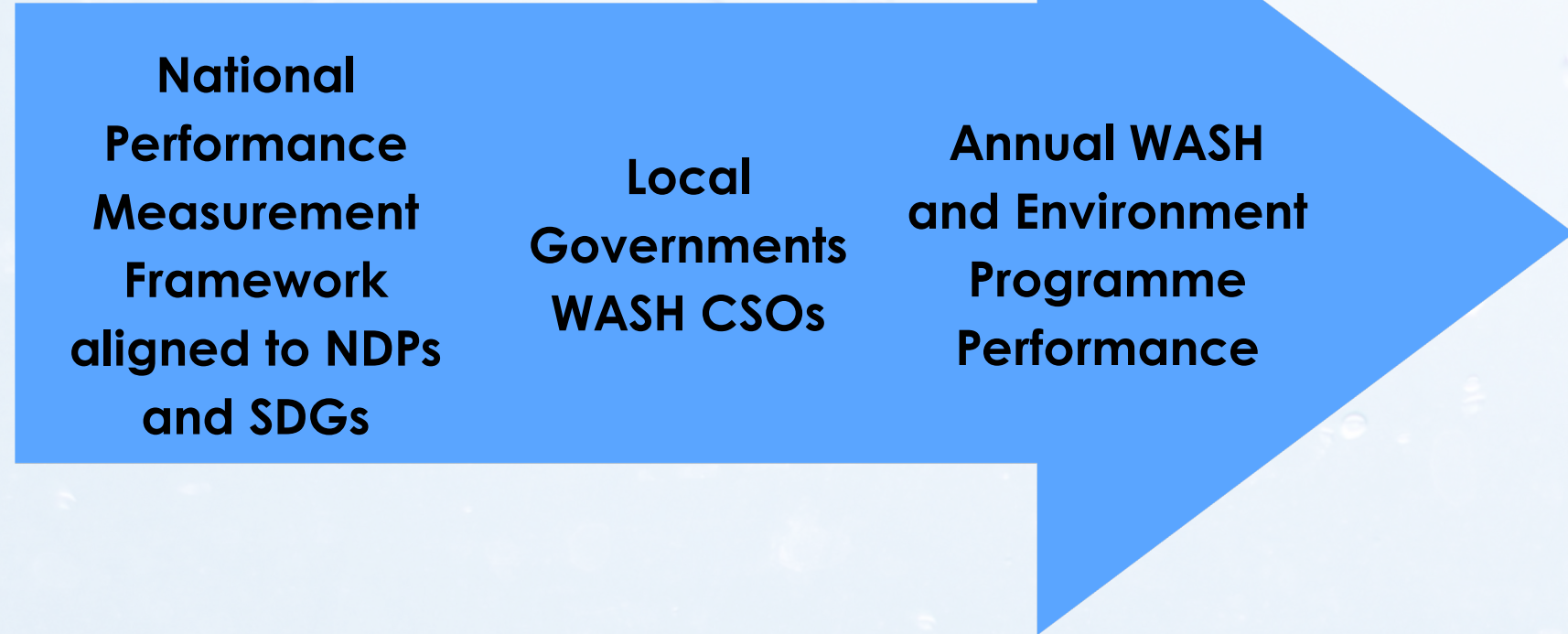
Kobo Tool with indicators aligned to MWE Performance Framework

Inhouse Analysis

Submitted to Line Ministries



CONTRIBUTION TO OVERALL NATIONAL ASSESSMENT OF WASH SDG TARGETS



UN WATER INTEGRATED MONITORING INITIATIVE FOR SDG 6

INDICATORS	CUSTODIANS
6.1.1 Proportion of population using safely managed drinking water services	WHO, UNICEF
6.2.1 Proportion of population using (a) safely managed sanitation services and (b) a hand-washing facility with soap and water	WHO, UNICEF
6.3.1 Proportion of domestic and industrial wastewater flows safely treated	WHO, UN-Habitat, UNSD
6.3.2 Proportion of bodies of water with good ambient water quality	UNEP
6.4.1 Change in water-use efficiency over time	FAO
6.4.2 Level of water stress: freshwater withdrawal as a proportion of available freshwater resources	FAO
6.5.1 Degree of integrated water resources management	UNEP
6.5.2 Proportion of transboundary basin area with an operational arrangement for water cooperation	UNECE, UNESCO
6.6.1 Change in the extent of water-related ecosystems over time	UNEP, Ramsar
6.a.1 Amount of water- and sanitation-related official development assistance that is part of a government-coordinated spending plan	WHO, OECD
6.b.1 Proportion of local administrative units with established and operational policies and procedures for participation of local communities in water and sanitation management	WHO, OECD



UWASNET



Plot 475M, Butabika Road, Luzira,
P.O. Box 33396,
Kampala, Uganda.



ngocoord@uwasnet.org



www.uwasnet.org

The background features a solid blue field with several large, overlapping white circles of varying sizes. The circles are positioned in the upper left and lower left areas, creating a dynamic, abstract pattern.

BASEflow

Hosted by WASHWeb
July 11th, 2024



Partnerships for an Improved WASH Data Ecosystem

A Malawi Case Study

*Muthi Nhlema, **Team Leader***

muthi@baseflowmw.org

Profile

- **Name:** Muthi Nhlema
- **NGO:** BASEflow
- **Website:** baseflowmw.org
- **Social Media:** Twitter, FaceBook, LinkedIn & YouTube
- **Mission:** Improve the sustainability of groundwater resources for rural population to access clean drinking water
- **Strategic Area:** Improving WASH data governance for informed data-driven decision-making



The WASH Data Challenge



The Initiative

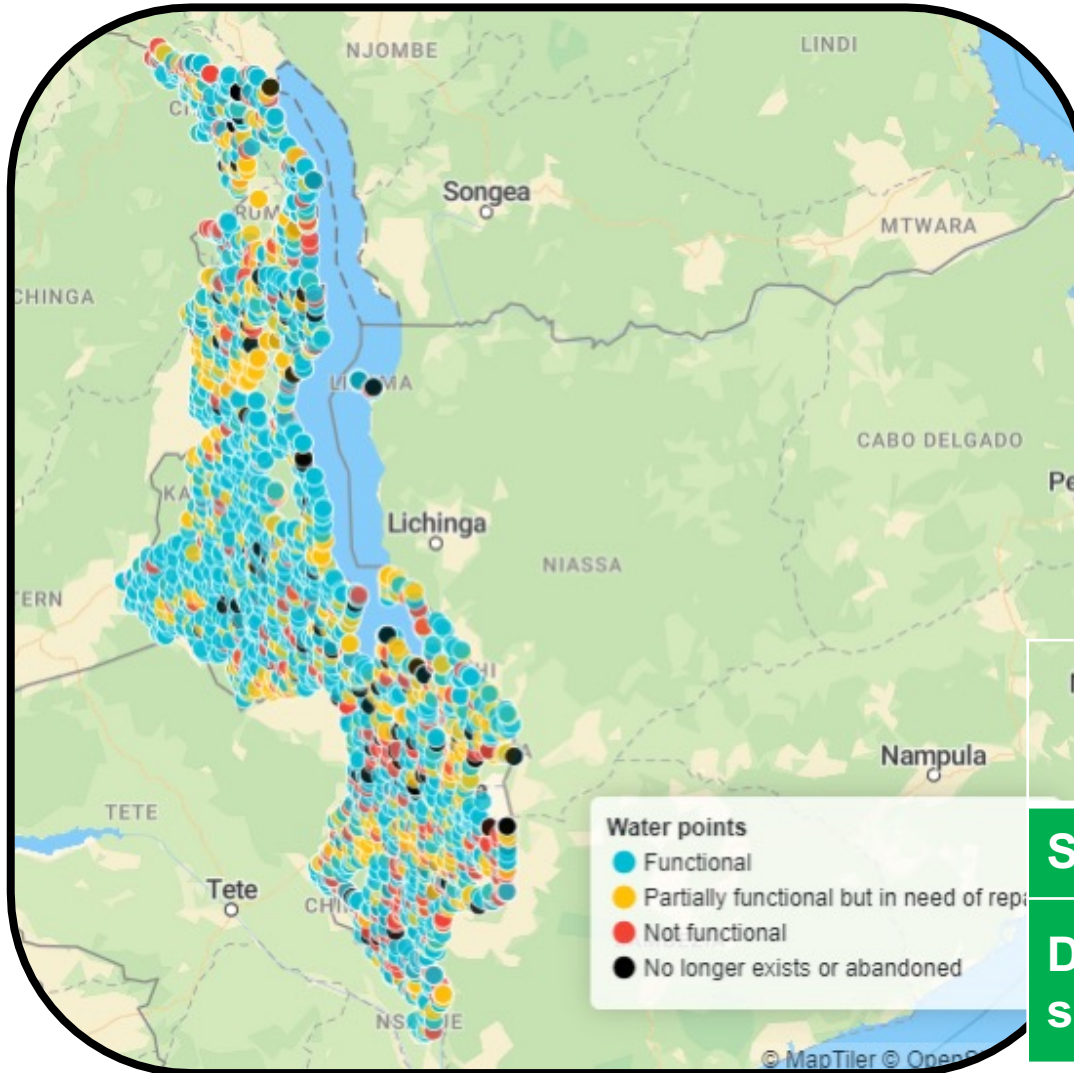
A hand-operated water pump is the central focus of the image. It is a metal structure with a vertical post and a horizontal handle. The pump is mounted on a concrete base. In the background, there are large trees and a dirt path. The overall scene is rural and outdoors.

- Using the data management system, mWater
- Train 354 government enumerators
- Map the following rural-based assets:
 - ✓ Communal water points
 - ✓ Latrines within 100 meters
 - ✓ Waste pits within 100 meters
- Institutionalize the WASH database within Ministry of Water and Sanitation

The Partnerships



The Result



- Availability
- Reliability
- Access
- Environment
- Management

	Water Points	Pit Latrines
Surveys	123,774	307,273
Data per survey	67	22

Key Enablers



- **Shared goal** for a harmonized management information system for the water sector
- **Clear roles and responsibility** to facilitate accountability e.g. ground logistics separate from data quality control
- **Leveraged individual strengths** and experience for effective implementation
- **Adaptive management** approach was adopted to adjust to emerging lessons and challenges e.g. change data quality checks



Key Challenges

- **Unexpressed expectations** = premediated resentments i.e. locus for capacity building within government
- **Implicit assumptions** about *institutional nature* of government's attitude to open data culture principles (shaped by past experiences)
- **External reluctance** from NGOs to collaborate with this existing efforts resulting in duplication and waste (*competition*)

Enable **data-driven** decision-making to **strengthen** state institutions

EVOLUTION OF PARTNERSHIPS!

**Strengthen state institutions
to enable data-driven
decision-making.**

Q&A

Facilitated by
Nicolas Dickinson



Next steps

- Continue the conversation with people you meet here today
- Follow us on LinkedIn for updates @WASHWeb
- Join WASHWeb and openwashdata at our World Water Week event, either in-person or online
- Thank you for your participation!

The background is a solid blue color with several large, white, overlapping circles scattered across it. The circles vary in size and position, creating a modern, abstract design.

Thank you!